

Adjustable triangle ground mounting system



1. Triangular mounting system profile

With system on single supports, usually one module row is fastened to rails, which rest on single supports. The individual supports may be roof or loaded individually. Standard angle is 30 degree and any angles are available.

Quick and simple mounting save your valued time.

Two screws finish whole mounting done. M10 expand-bolt to fix foot. M8 screw to connect rail and panels. So that is it.



features:

The pre-assembled supports are folding and universal angle. This universal support system are pre-assembled, each set are packaged separately.

- Stable and highly durable system
- All components are made of Q235B
- Perfectly components aide in reducing assemble time
- universal angel system, first choice in small PV power plant
- one socket spanner and one driller can solve all problems
- Extremely short your valued time

Take and open the racks and rails

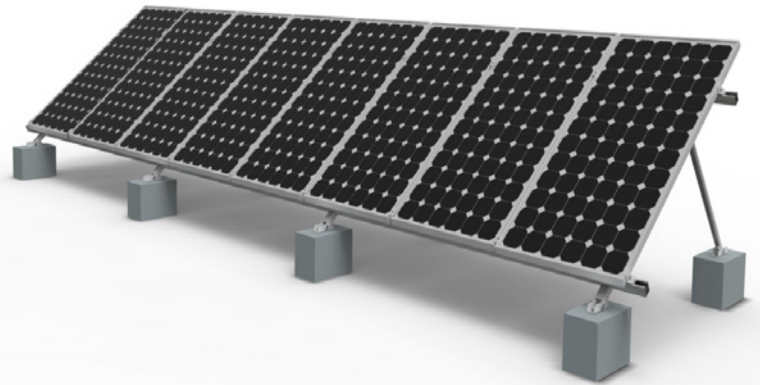
Fix rack legs by expand bolt

Fasten rail on the top of rack

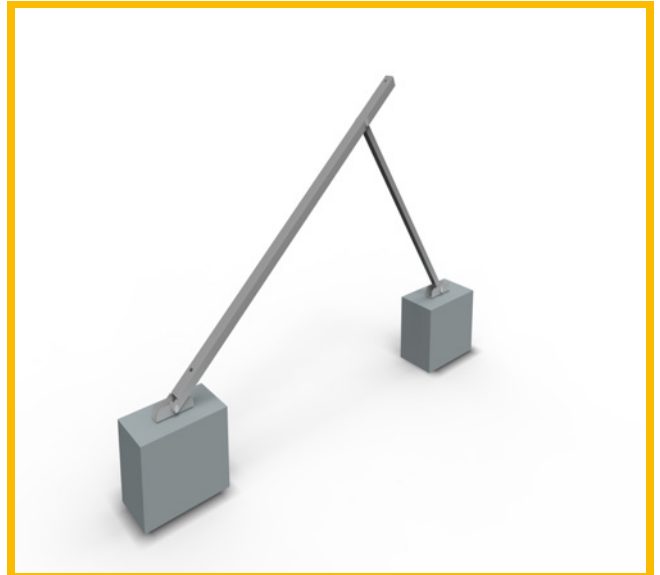
Fasten panel on the rail. All done, that is it.

Specification:

Installation Site:	Flat roof&pen filed
Wind Load:	<40m/s
Snow Load:	<1.4KN/m2
System Tilt Angle:	10-15deg/15-30deg/30-60deg
Applicable Module:	Framed or thin film
Module mounting:	portrait or landscape
System Material:	Steel hot-dip galvanized
Foundation:	concrete base
Warranty:	10 years warranty and 20 years service life



Triangle mounting system show:



Experience that pays

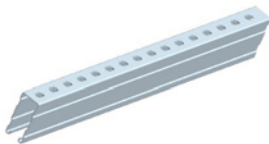
Chiko Solar or your local Chiko Solar partner individually match all kinds of the solar modules and installation situation to ensure that you get the ideal system to meet your requirements. All of our sales partners have a considerable amount of expertise and many years of experience in solar technology and have been personally chosen by us according to the strictest quality criteria.

2. Tools required

- Tape measure or other type measurer
- Open-ended spanner set 9, 10, 17, 19 mm
- 6 mm Allen key
- Torque Wrench
- Spirit level or plumb or other relevant tool
- Rubber hammer



3. Overview of the components



Rail 2560mm/3200mm/3400mm
/4200mm



Rail connector kit



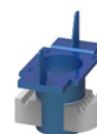
Module end clamp set
(pre-assembled)



Folding triangle support structure
(pre-assembled)

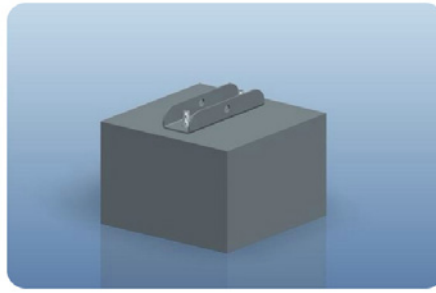
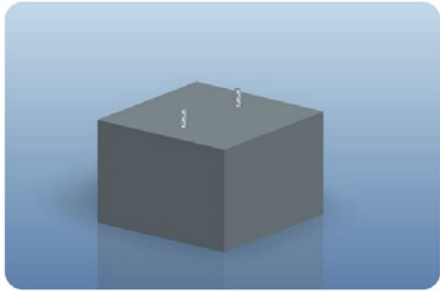


Module middle clamp set
(pre-assembled)



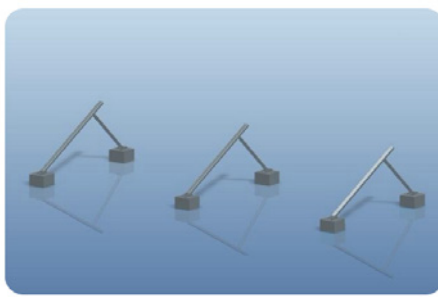
Channel nut

4. Assembly step by step



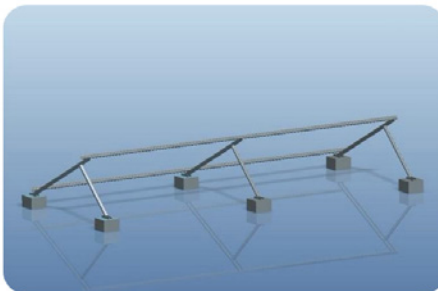
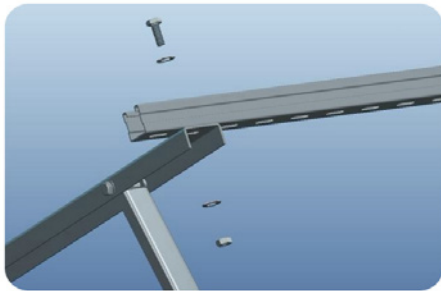
1

Pre-assemble expand bolts



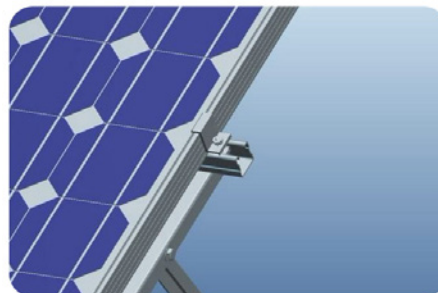
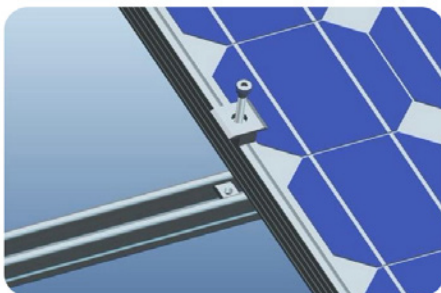
2

Fix triangle support structure into expand bolts



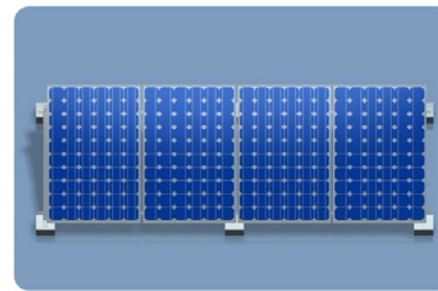
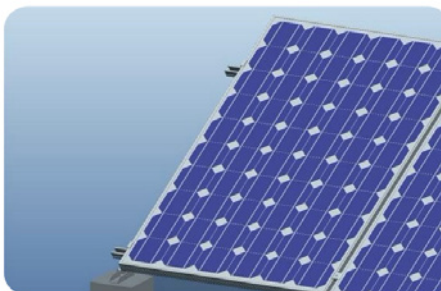
3

Fix rail onto support structure



4

Fix solar panel on structure via mid and end clamps



5

Finish all array job